

Specifications

Application: Roads and highways, Urban roads and street, squares areas, Residential areas, factory

Installing Hight: 5-12m

Mounting : Side-entry, Ø48-Ø60mm x120 spigot or vertical installing for Ø60-Ø76mm pole

Lamps: HID, HPS High pressure sodium or MH metal halide

Lamp Wattage: 150W, 250W, 400W ,E40/E39 Socket

Input Voltage: 220-240V/50Hz, 110-130V/60Hz

Power Factor: >0.9

Working Temperature: -40 to 50 C

Material: Aluminium body

Housing: Heavy duty die cast aluminium, with polyester powder coating

Reflector: Anodized high pure aluminium

Lampshade: Clear curved toughened glass

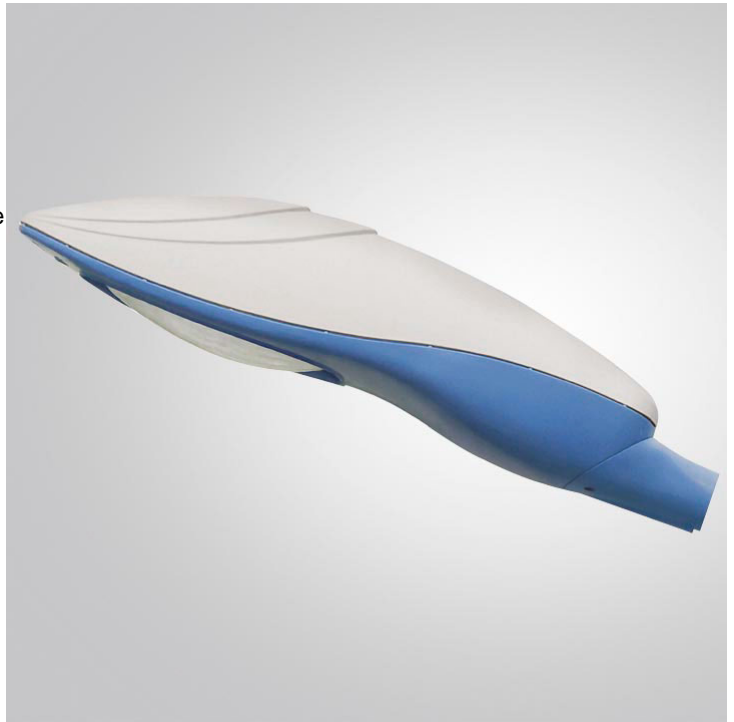
Gasket: Silicone sealing gasket

Lamp holder: Adjustable position for different lamp

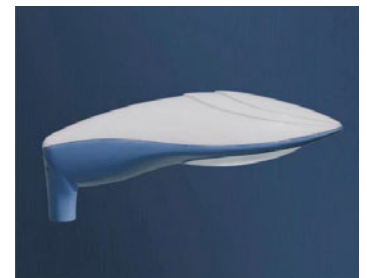
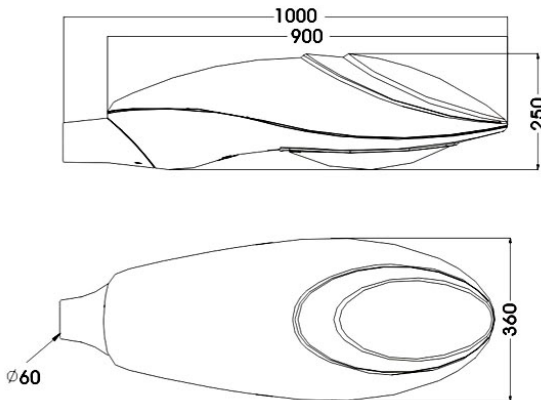
Color: Standard painting colors is black (BK), dark grey(GY)(RAL7016), light grey(LG)(RAL7042), silver grey(SG), White(WH), other colors are available

Standards:

Isolation degree Class I, IP Rating IP65

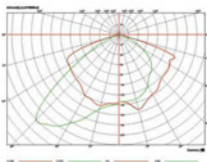


Dimension

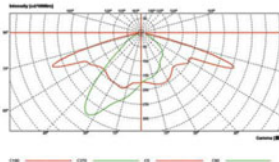


Photometrics

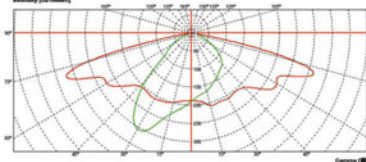
Polar diagram (150w) Cone measurement



Polar diagram (250w) Cone measurement



Polar diagram (400w) Cone measurement



Ordering Information

Order No.	Lamp Wattage	Lamp Socket	Install Height	Gross/ Net Weight	Dimension L*W*H(cm)	Packing size(cm)	QTY(pcs) 20'/40'GP
HL602	MAX 400W	E40	5m-12m	11 / 10kg	100x36x25	103x39x30	240/480



HL602-
PTR262S



HL602-
PTR006S



HL602-
PTR332S



HL602-
PTR211S



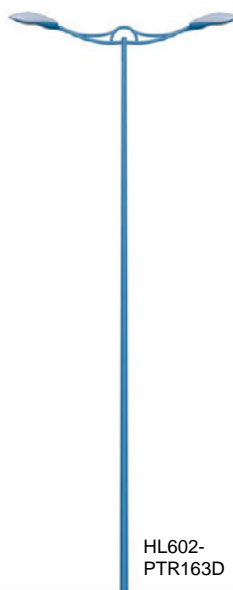
HL602-
PTR210S



HL602-
PTR007D



HL602-
PTR006D



HL602-
PTR163D



HL602-
PSR145D