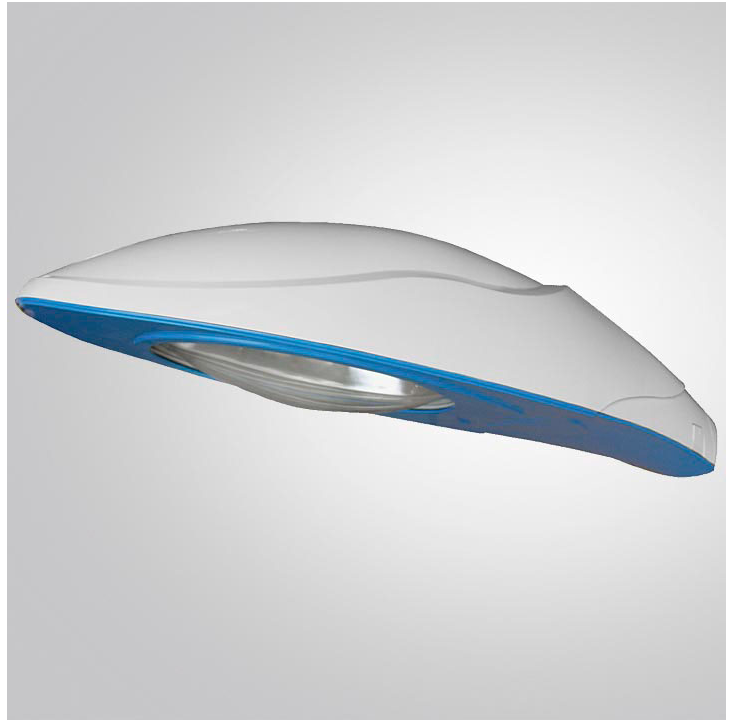
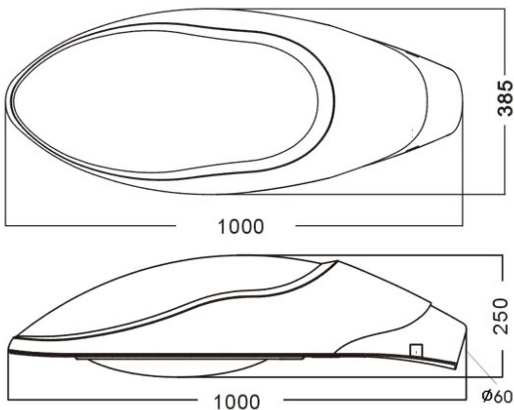


**Specifications**

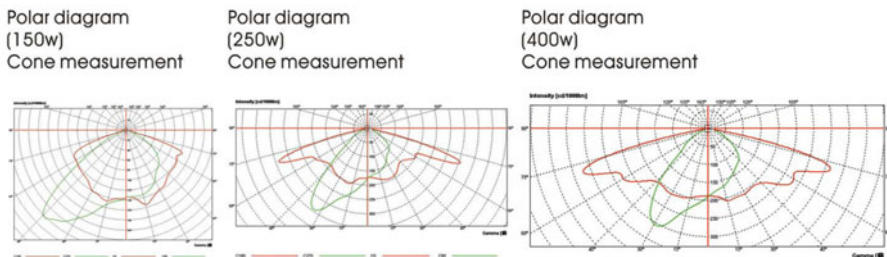
**Application:** Roads and highways, Urban roads and street, squares areas, Residential areas, factory  
**Installing Hight:** 5-12m  
**Mounting :** Side-entry, Ø48-Ø60mm x120 spigot  
**Lamps:** HPS High pressure sodium or MH metal halide,  
**Lamp Wattage**  
 Input Voltage: 220-240V/50Hz, 110-130V/60Hz  
 Power Factor: >0.9  
 Working Temperature: -40 to 50 °C  
**Material:** Aluminium body  
 Housing: Heavy duty die cast aluminium, with polyester powder coating  
 Reflector: Anodized high pure aluinium  
 Lampshade: Clear curved toughened glass  
 Gasket: Silicone sealing gasket  
 Lamp holder: Adjustable position for different lamp  
**Color:** Standard painting colors is black (BK), dark grey(GY)(RAL7016), light grey(LG)(RAL7042), silver grey(SG), White(WH), other colors are available  
**Standards:**  
 Isolation degree Class I, IP Rating IP65



**Dimension**



**Photometrics**



**Ordering Information**

Order No.	Lamp Wattage	Lamp Socket	Install Height	Gross/ Net Weight	Dimension L*W*H(cm)	Packing size(cm)	QTY(pcs) 20'/40'GP
HL604	MAX 400W	E40	5m-12m	12 / 11kg	100x38.5x25	103x42x28	230/460



HL604-  
PTR162S



HL604-  
PTR210S



HL604-  
PTR201S



HL604-  
PTR221S



HL604-  
PTR251S



HL604-  
PTR006D



HL604-  
PTR007D



HL604-  
PTR201D



HL604-  
PTR376D